

UPGRADING YOUR TR-CPQ SERIES FIRMWARE

Before applying Build TR-4.0.2CPQ your radio must be running Build 84 or higher.



Warning: Before applying any versions of firmware please read and understand this entire document. If you encounter problems with the new firmware you can seek help from the Support Team. You should only perform a firmware upgrade during supported hours (7am to 5pm PST, Monday to Friday) in case you need emergency assistance. If you have any questions, please call or email us before starting the upgrade process. It is advised that network administrators document their configuration before proceeding with the update, then after the upgrade manually re-enter the information if required.

Important: Firmware may become unusable if inappropriately applied or the connection is broken during the upgrade. Ensure no interruption during upgrade. If the connection is broken or power goes off during upgrade, the unit may become inoperative! **Once this package is applied, you cannot revert to earlier versions!**

This package contains the following:

Firmware

TR-4.0.3CPQ.bin

Documents

Upgrading your Firmware build 4.0.3, Release Notes.pdf (this document)
General Firmware Changes.pdf.

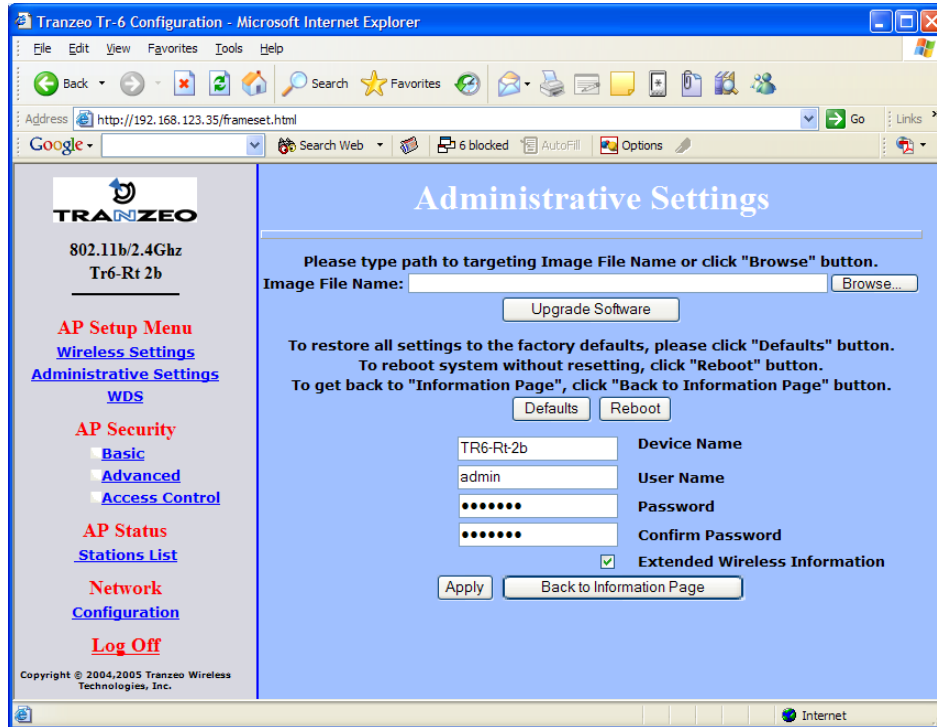
MIBs

tranzeo.MIB Private MIB for Tranzeo Wireless radios running 3.3.0 or higher, V0.2

UPGRADING YOUR TR-CPQ SERIES FIRMWARE

Upgrading the TR-CPQ firmware to Build TR-4.0.3CPQ

1. Log into the radio and go to the *Administrative Settings* page.



2. Click *Browse* to browse to the location of the upgrade file **TR-4.0.3CPQ.bin**. Then click the upgrade software button to apply the firmware. The radio will upgrade the firmware and then reboot. All the LEDs including the Power LED will go blank during the upgrade for up to 30 seconds. This is normal.
3. Your Radio is now upgraded and will continue to pass traffic after it reboots.

See the next page for Release Notes

UPGRADING YOUR TR-CPQ SERIES FIRMWARE

CHANGES IN 4.03

UI:

- Changed upgrade to import , downgrade to export from configuration settings page
- Removed extra underline from left frame in left frame of webgui
- Fixed typo on Configuration Settings page: addrss
- Changed "Fallback" to "Rollback"
- Removed "Configuration" in browser bar
- Fixed: Full IP address isn't displayed in the AP's Stations List when IP has more than 10 digits
- Fixed: DNS settings are not saved to config file correctly under certain conditions
- Fixed: Configuration keys interpret 'Yes' and 'No' backwards for dhcp server settings

RADIO AND WIRELESS:

- Enabled quarter and half channel support for the following card types:
 - 2A,2B,2E,3Y,3W
- Fixed: CPQ loses connection to Enroute AP when rates are changed

CHANGES SPECIFIC TO MODELS(CPQ/SL5/MULTI/FDD/49):

- Fixed: PXP mode no longer becomes disabled when importing config files
- Fixed: Configuration file export didn't save pxp option

CHANGES SPECIFIC TO MODELS(FDD):

NOTE; These issues were found in 4.0.2 beta.

- Fixed: FDD link has fully signal on one pair, but reduced signal on the other pair
- Fixed: FDD in 4.0.2 keeps resetting CS (duplexer) back to CS1 even if CS2 or CS3 is selected

For past firmware changes please see the General Firmware Changes document.